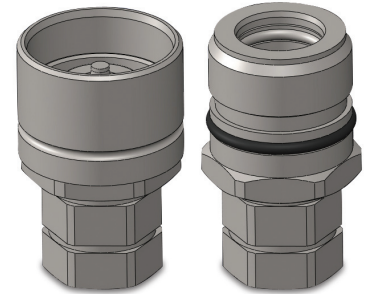
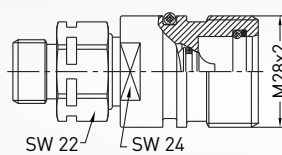


HYDRAULIC COUPLINGS
HYDRAULIK KUPPLUNGEN

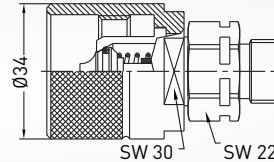
SERIE 054



054.08 Couplers / Muffe

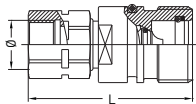


054.08 Plug / Stecker



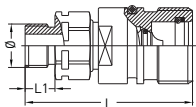
Couplers / Muffe

Rohr Tube	Connection Anschlüsse	Order No Bestellnr.	L	L1
-----------	-----------------------	---------------------	---	----



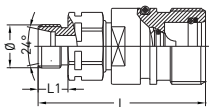
Female thread DIN 3852
Innengewinde DIN 3852

BSP 1/4"		054.08 DGB 13	64	13
BSP 3/8"		054.08 DGB 17	64	13
M16x1.5		054.08 DGBM 16	64	13
NPT 3/8"		054.08 NGB 17	64	13



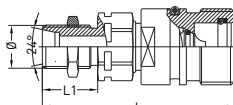
Male threaded DIN 3852
Außengewinde DIN 3852

BSP 3/8"		054.08 EGB 17	62	12
BSP 3/4"-16		054.08 JGB 19-00	67	17



Male threaded sockets for hydraulic pipes with 24° taper according to DIN 3861
Außengewinde mit 24° Dichtkonus

Ø8	M14x1.5	054.08 EGBM 14-08	61	10
Ø10	M16x1.5	054.08 EGBM 16-10	62	11
Ø12	M18x1.5	054.08 EGBM 18-12	62	11
Ø8	M16x1.5	054.08 EGBM 16-08	63	11
Ø10	M18x1.5	054.08 EGBM 18-10	63	12
Ø12	M20x1.5	054.08 EGBM 20-12	63	12



Male threaded sockets for hydraulic pipes with 24° taper according to DIN 3861 (Bulkhead)
Außengewinde mit 24° Dichtkonus (Schottwand)

Ø8	M14x1.5	054.08 SGBM 14-08	76	25
Ø10	M16x1.5	054.08 SGBM 16-10	77	26
Ø12	M18x1.5	054.08 SGBM 18-12	78	27
Ø8	M16x1.5	054.08 SGBM 16-08	78	27
Ø10	M18x1.5	054.08 SGBM 18-10	78	27
Ø12	M20x1.5	054.08 SGBM 20-12	78	27

Interchangeability - Kompatibilität
VOSWINKEL - HS SERIE
FASTER - CVV SERIE

Temperature Range - Temperaturbereich
-20 °C +100 °C (-4 °F +212 °F)

Working Pressure - Betriebsdruck
0 - 450 bar (0 - 6525 PSI)

Flow capacity - Nennweite
NW - 10 mm

Standard version - Standardversion
Double Shut off - Beidseitig absperrbar
Steel - Stahl
Zinc Plated - Verzinkt
Nitrile (Ni) - NBR (Ni)
Screw to connect - Schraubverriegelung

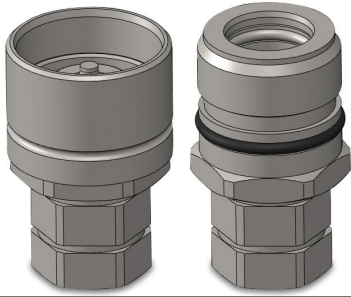
Attention: Only plug and socket with the same thread fit together.
Achtung: Nur Nippel und Kupplungen mit demselben Gewinde passen zusammen

Fonctions
TST 054 series couplings are screw to connect type that can be used in heavy duty high pressureized hydraulics and industrial applications as well as in mobile applications with vibrations.

Technischer Merkmal
Die Serie TST 054 ist mit einer Schraubverriegelung ausgeführt und findet ihren Einsatz bei hohen Druckenwendungen.

Material - Material
Body-Grundkörper : Steel - Stahl
Valve - Ventil : Steel - Stahl
Springs - Federn : Spring Steel - Federstahl
Seals - Dichtungen : Buna - N - Buna N



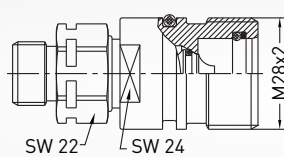


SERIE **054** ■

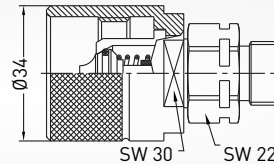
HYDRAULIC COUPLINGS
HYDRAULIK KUPPLUNGEN



054.08 Couplers / Muffe



054.08 Plug / Stecker



Interchangeability - Kompatibilität
VOSWINKEL - HS SERIE
FASTER - CVV SERIE

Temperature Range - Temperaturbereich
-20°C +100°C (-4°F +212°F)

Working Pressure - Betriebsdruck
0 - 450 bar (0 - 6525 PSI)

Flow capacity - Nennweite
NW - 10 mm

Standard version - Standardversion
Double Shut off - Beideseitig absperierbar
Steel - Stahl
Zinc Plated - Verzinkt
Nitrile (Ni) - NBR (Ni)
Screw to connect - Schraubverriegelung

Attention: Only plug and socket with the same thread fit together.
Achtung: Nur Nippel und Kupplungen mit demselben Gewinde passen zusammen

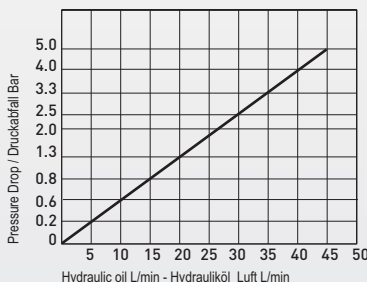
Fonctions

TST 054 series couplings are screw to connect type that can be used in heavy duty high pressureized hydraulics and industrial applications as well as in mobile applications with vibrations.

Technischer Merkmal
Die Serie TST 054 ist mit einer Schraubverriegelung ausgeführt und findet ihren Einsatz bei hohen Druckenwendungen.

Material - Material

Body-Grundkörper : Steel - Stahl
Valve - Ventil : Steel - Stahl
Springs - Federn : Spring Steel - Federstahl
Seals - Dichtungen : Buna - N - Buna N



Plugs / Stecker

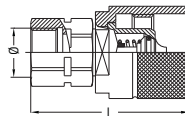
Rohr
Tube

Connection
Anschlüsse
Ø

Order No
Bestellnr.

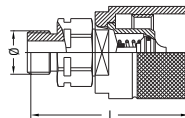
L

L1



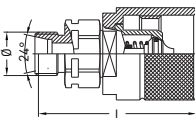
Female thread DIN 3852
Innengewinde DIN 3852

BSP 1/4"	054.08 DUB 13	61	13
BSP 3/8"	054.08 DUB 17	61	13
M16x1.5	054.08 DUBM 16	61	13
NPT 3/8"	054.08 NUB 17	61	13



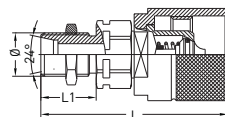
Male threaded DIN 3852
Außengewinde DIN 3852

BSP 3/8"	054.08 EUB 17	62	12
BSP 3/4"-16	054.08 JUB 19-00	53	17



Male threaded sockets for hydraulic pipes with 24° taper according to DIN 3861
Außengewinde mit 24° Dichtkonus

Ø8	M14x1.5	054.08 EUBM 14-08	46	10
Ø10	M16x1.5	054.08 EUBM 16-10	47	11
Ø12	M18x1.5	054.08 EUBM 18-12	47	11
Ø8	M16x1.5	054.08 EUBM 16-08	48	12
Ø10	M18x1.5	054.08 EUBM 18-10	48	12
Ø12	M20x1.5	054.08 EUBM 20-12	48	12

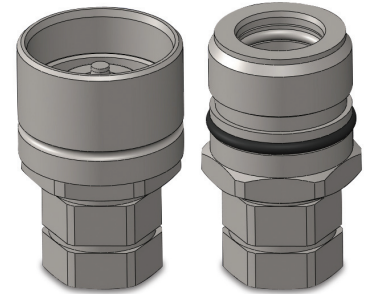


Male threaded sockets for hydraulic pipes with 24° taper according to DIN 3861 (Bulkhead)
Außengewinde mit 24° Dichtkonus (Schottwand)

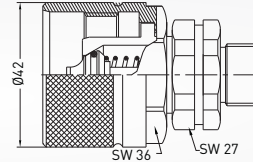
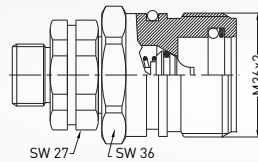
Ø8	M14x1.5	054.08 SUBM 14-08	61	25
Ø10	M16x1.5	054.08 SUBM 16-10	62	26
Ø12	M18x1.5	054.08 SUBM 18-12	63	27
Ø8	M16x1.5	054.08 SUBM 16-08	63	27
Ø10	M18x1.5	054.08 SUBM 18-10	63	27
Ø12	M20x1.5	054.08 SUBM 20-12	63	27

HYDRAULIC COUPLINGS
HYDRAULIK KUPPLUNGEN

■ SERIE 054



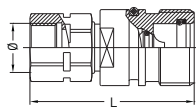
054.10 Couplers / Muffe



054.10 Plug / Stecker

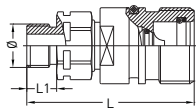
Couplers / Muffe

Rohr Tube	Connection Anschlüsse	Order No Bestellnr.	L	L1
-----------	-----------------------	---------------------	---	----



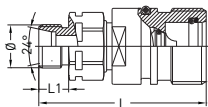
Female thread DIN 3852
Innengewinde DIN 3852

BSP 3/8"	054.10 DGB 17	68	15
BSP 1/2"	054.10 DGB 21	68	15
NPT 1/2"	054.10 NGB 21	68	15
UNF 7/8"-14	054.10 UGB 22	73	18
M18x1.5	054.10 DGBM 18	68	15
M22x1.5	054.10 DGBM 21	68	15



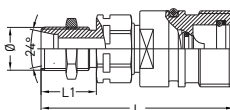
Male threaded DIN 3852
Außengewinde DIN 3852

BSP 3/8"	054.10 EGB 17	70	12
BSP 1/2"	054.10 JGB 19-00	70	12
M22x1.5	054.10 EGBM 22	70	12



Male threaded sockets for hydraulic pipes with 24° taper according to DIN 3861
Außengewinde mit 24° Dichtkonus

Ø8	M14x1.5	054.10 EGBM 14-08	64	10
Ø10	M16x1.5	054.10 EGBM 16-10	65	11
Ø12	M18x1.5	054.10 EGBM 18-12	65	11
Ø15	M22x1.5	054.10 EGBM 22-15	66	12
Ø18	M26x1.5	054.10 EGBM 26-18	66	12
Ø10	M18x1.5	054.10 EGBM 18-10	66	12
Ø12	M20x1.5	054.10 EGBM 20-12	66	12
Ø14	M22x1.5	054.10 EGBM 22-14	68	14
Ø16	M24x1.5	054.10 EGBM 24-16	68	14
Ø20	M30x2.0	054.10 EGBM 30-20	70	16



Male threaded sockets for hydraulic pipes with 24° taper according to DIN 3861 (Bulkhead)
Außengewinde mit 24° Dichtkonus (Schottwand)

Ø8	M14x1.5	054.10 SGBM 14-08	80	26
Ø10	M16x1.5	054.10 SGBM 16-10	80	26
Ø12	M18x1.5	054.10 SGBM 18-12	84	30
Ø15	M22x1.5	054.10 SGBM 22-15	81	27
Ø18	M26x1.5	054.10 SGBM 26-18	81	27
Ø10	M18x1.5	054.10 SGBM 18-10	80	26
Ø12	M20x1.5	054.10 SGBM 20-12	81	27
Ø14	M22x1.5	054.10 SGBM 22-14	83	29
Ø16	M24x1.5	054.10 SGBM 24-16	83	29

Interchangeability - Kompatibilität
VOSWINKEL - HS SERIE
FASTER - CVV SERIE

Temperature Range - Temperaturbereich
-20°C +100°C (-4°F +212°F)

Working Pressure - Betriebsdruck
0 - 400 bar (0 - 5800 PSI)

Flow capacity - Nennweite
NW - 12,5 mm

Standard version - Standardversion
Double Shut off - Beidseitig absperierbar
Steel - Stahl
Zinc Plated - Verzinkt
Nitrile (Ni) - NBR (Ni)
Screw to connect - Schraubverriegelung

Attention: Only plug and socket with the same thread fit together.

Achtung: Nur Nippel und Kupplungen mit demselben Gewinde passen zusammen

Fonctions

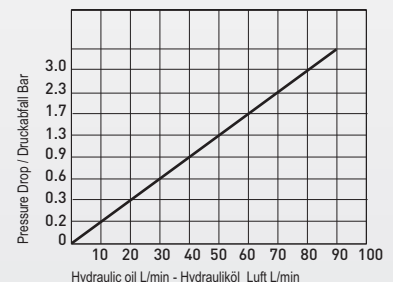
TST 054 series couplings are screw to connect type that can be used in heavy duty high pressureized hydraulics and industrial applications as well as in mobile applications with vibrations.

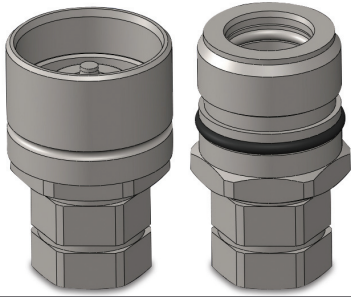
Technischer Merkmal

Die Serie TST 054 ist mit einer Schraubverriegelung ausgeführt und findet ihren Einsatz bei hohen Druckenwendungen.

Material - Material

Body-Grundkörper : Steel - Stahl
Valve - Ventil : Steel - Stahl
Springs - Federn : Spring Steel - Federstahl
Seals - Dichtungen : Buna - N - Buna N



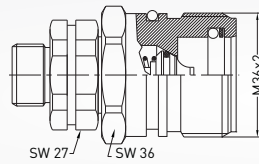


SERIE **054** ■

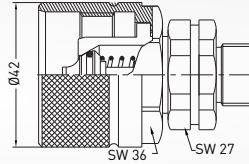
HYDRAULIC COUPLINGS
HYDRAULIK KUPPLUNGEN



054.10 Couplers / Muffe



054.10 Plug / Stecker



Interchangeability - Kompatibilität
VOSWINKEL - HS SERIE
FASTER - CVV SERIE

Temperature Range - Temperaturbereich
-20°C +100°C (-4°F +212°F)

Working Pressure - Betriebsdruck
0 - 400 bar (0 - 5800 PSI)

Flow capacity - Nennweite
NW - 12,5 mm

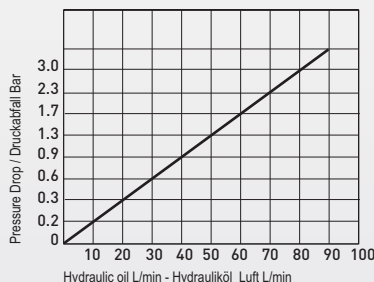
Standard version - Standardversion
Double Shut off - Beidseitig absperierbar
Steel - Stahl
Zinc Plated - Verzinkt
Nitrile (Ni) - NBR (Ni)
Screw to connect - Schraubverriegelung

Attention: Only plug and socket with the same thread fit together.
Achtung: Nur Nippel und Kupplungen mit demselben Gewinde passen zusammen

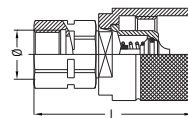
Fonctions
TST 054 series couplings are screw to connect type that can be used in heavy duty high pressureized hydraulics and industrial applications as well as in mobile applications with vibrations.

Technischer Merkmal
Die Serie TST 054 ist mit einer Schraubverriegelung ausgeführt und findet ihren Einsatz bei hohen Druckenwendungen.

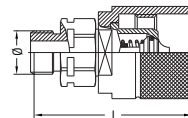
Material - Material
Body-Grundkörper : Steel - Stahl
Valve - Ventil : Steel - Stahl
Springs - Federn : Spring Steel - Federstahl
Seals - Dichtungen : Buna - N - Buna N



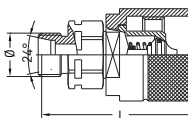
Plugs / Stecker



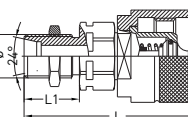
Female thread DIN 3852
Innengewinde DIN 3852



Male threaded DIN 3852
Außengewinde DIN 3852



Male threaded sockets for hydraulic pipes with 24° taper according to DIN 3861
Außengewinde mit 24° Dichtkonus

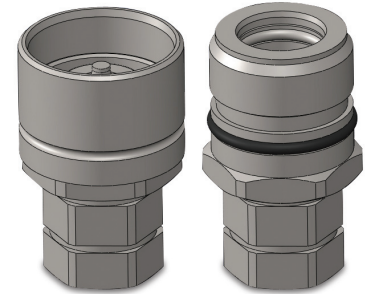


Male threaded sockets for hydraulic pipes with 24° taper according to DIN 3861 (Bulkhead)
Außengewinde mit 24° Dichtkonus (Schottwand)

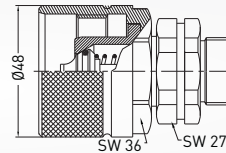
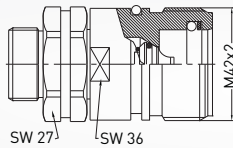
Rohr Tube	Connection Anschlüsse Ø	Order No Bestellnr.	L	L1
	BSP 3/8"	054.10 DUB 17	66	15
	BSP 1/2"	054.10 DUB 21	66	15
	NPT 1/2"	054.10 NUB 21	66	15
	UNF 7/8"-14	054.10 UUB 22	59	18
	M18x1.5	054.10 DUBM 18	66	15
	M22x1.5	054.10 DUBM 21	66	15
	BSP 3/8"	054.10 EUB 17	68	12
	BSP 1/2"	054.10 JUB 19-00	68	12
	M22x1.5	054.10 EUBM 22	68	12
Ø8	M14x1.5	054.10 EUBM 14-08	50	10
Ø10	M16x1.5	054.10 EUBM 16-10	51	11
Ø12	M18x1.5	054.10 EUBM 18-12	51	11
Ø15	M22x1.5	054.10 EUBM 22-15	52	12
Ø18	M26x1.5	054.10 EUBM 26-18	52	12
Ø10	M18x1.5	054.10 EUBM 18-10	52	12
Ø12	M20x1.5	054.10 EUBM 20-12	52	12
Ø14	M22x1.5	054.10 EUBM 22-14	54	14
Ø16	M24x1.5	054.10 EUBM 24-16	54	14
Ø20	M30x2.0	054.10 EUBM 30-20	56	16
Ø8	M14x1.5	054.10 SUBM 14-08	66	26
Ø10	M16x1.5	054.10 SUBM 16-10	66	26
Ø12	M18x1.5	054.10 SUBM 18-12	70	30
Ø15	M22x1.5	054.10 SUBM 22-15	67	27
Ø18	M26x1.5	054.10 SUBM 26-18	67	27
Ø10	M18x1.5	054.10 SUBM 18-10	66	26
Ø12	M20x1.5	054.10 SUBM 20-12	67	27
Ø14	M22x1.5	054.10 SUBM 22-14	69	29
Ø16	M24x1.5	054.10 SUBM 24-16	69	29

HYDRAULIC COUPLINGS
HYDRAULIK KUPPLUNGEN

SERIE 054



054.12 Couplers / Muffe



054.12 Plug / Stecker

Couplers / Muffe

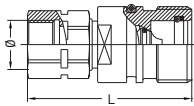
Rohr
Tube

Connection
Anschlüsse
Ø

Order No
Bestellnr.

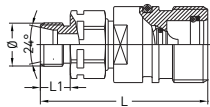
L

L1



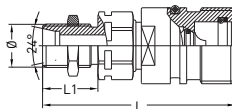
Female thread DIN 3852
Innengewinde DIN 3852

BSP 1/2"	054.12 DGB 21	85	19
BSP 3/4"	054.12 DGB 26	85	19
NPT 3/4"	054.12 NGB 26	85	19
M22x1.5	054.12 DGBM 22	85	19



Male threaded sockets for
hydraulic pipes with
24° taper according to DIN 3861
Außengewinde mit 24° Dichtkonus

Ø12	M18x1.5	054.12 EGBM 18-12	79	11
Ø15	M22x1.5	054.12 EGBM 22-15	80	12
Ø18	M26x1.5	054.12 EGBM 26-18	80	12
Ø22	M30x2.0	054.12 EGBM 30-22	82	14
Ø16	M24x1.5	054.12 EGBM 24-16	82	14
Ø20	M30x2.0	054.12 EGBM 30-20	84	16



Male threaded sockets for
hydraulic pipes with
24° taper according to DIN 3861
(Bulkhead)
Außengewinde mit 24° Dichtkonus
(Schottwand)

Ø12	M18x1.5	054.12 SGBM 18-12	94	26
Ø15	M22x1.5	054.12 SGBM 22-15	95	27
Ø18	M26x1.5	054.12 SGBM 26-18	95	27
Ø22	M30x2.0	054.12 SGBM 30-22	104	36
Ø16	M24x1.5	054.12 SGBM 24-16	97	29
Ø20	M30x2.0	054.12 SGBM 30-20	104	36

Interchangeability - Kompatibilität
VOSWINKEL - HS SERIE
FASTER - CVV SERIE

Temperature Range - Temperaturbereich
-20°C +100°C (-4°F +212°F)

Working Pressure - Betriebsdruck
0 - 400 bar (0 - 5800 PSI)

Flow capacity - Nennweite
NW - 19 mm

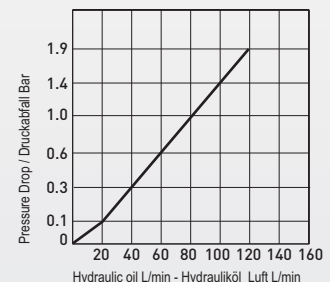
Standard version - Standardversion
Double Shut off - Beideseitig absperrbar
Steel - Stahl
Zinc Plated - Verzinkt
Nitrile (Ni) - NBR (Ni)
Screw to connect - Schraubverriegelung

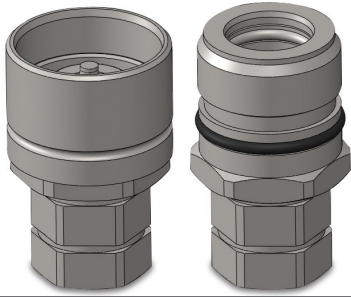
Attention: Only plug and socket with the
same thread fit together.
Achtung: Nur Nippel und Kupplungen mit
demselben Gewinde passen zusammen

Fonctions
TST 054 series couplings are screw to
connect type that can be used in heavy duty
high pressureized hydraulics and industrial
applications as well as in mobile applications
with vibrations.

Technischer Merkmal
Die Serie TST 054 ist mit einer
Schraubverriegelung ausgeführt und findet
ihren Einsatz bei hohen Druckanwendungen.

Material - Material
Body-Grundkörper : Steel - Stahl
Valve - Ventil : Steel - Stahl
Springs - Federn : Spring Steel - Federstahl
Seals - Dichtungen : Buna - N - Buna N



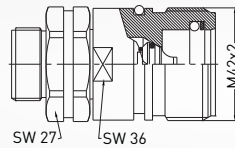


SERIE **054** ■

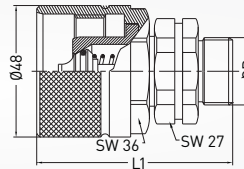
HYDRAULIC COUPLINGS
HYDRAULIK KUPPLUNGEN



054.12 Couplers / Muffe



054.12 Plug / Stecker



Interchangeability - Kompatibilität
VOSWINKEL - HS SERIE
FASTER - CVV SERIE

Temperature Range - Temperaturbereich
-20°C +100°C (-4°F +212°F)

Working Pressure - Betriebsdruck
0 - 400 bar (0 - 5800 PSI)

Flow capacity - Nennweite
NW - 19 mm

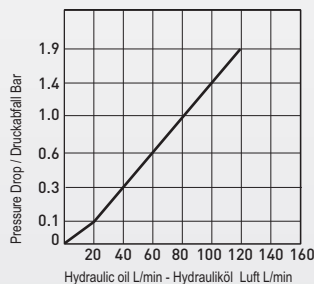
Standard version - Standardversion
Double Shut off - Beideseitig absperierbar
Steel - Stahl
Zinc Plated - Verzinkt
Nitrile (Ni) - NBR (Ni)
Screw to connect - Schraubverriegelung

Attention: Only plug and socket with the same thread fit together.
Achtung: Nur Nippel und Kupplungen mit demselben Gewinde passen zusammen

Fonctions
TST 054 series couplings are screw to connect type that can be used in heavy duty high pressureized hydraulics and industrial applications as well as in mobile applications with vibrations.

Technischer Merkmal
Die Serie TST 054 ist mit einer Schraubverriegelung ausgeführt und findet ihren Einsatz bei hohen Druckerwendungen.

Material - Material
Body-Grundkörper : Steel - Stahl
Valve - Ventil : Steel - Stahl
Springs - Federn : Spring Steel - Federstahl
Seals - Dichtungen : Buna - N - Buna N



Plugs / Stecker

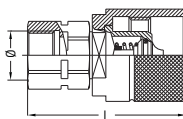
Rohr Tube

Connection Anschlüsse
Ø

Order No Bestellnr.

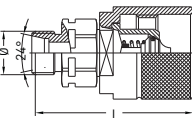
L

L1



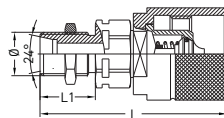
Female thread DIN 3852
Innengewinde DIN 3852

BSP 1/2"	054.12 DUB 21	76	19
BSP 3/4"	054.12 DUB 26	76	19
NPT 3/4"	054.12 NUB 26	76	19
M22x1.5	054.12 DUBM 22	76	19



Male threaded sockets for hydraulic pipes with 24° taper according to DIN 3861
Außengewinde mit 24° Dichtkonus

Ø12	M18x1.5	054.12 EUBM 18-12	58	11
Ø15	M22x1.5	054.12 EUBM 22-15	59	12
Ø18	M26x1.5	054.12 EUBM 26-18	59	12
Ø22	M30x2.0	054.12 EUBM 30-22	61	14
Ø16	M24x1.5	054.12 EUBM 24-16	61	14
Ø20	M30x2.0	054.12 EUBM 30-20	63	16

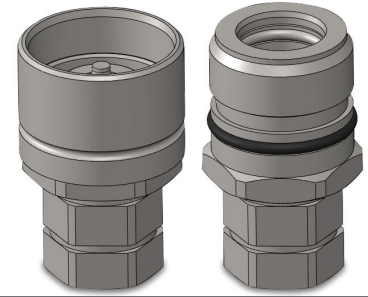


Male threaded sockets for hydraulic pipes with 24° taper according to DIN 3861 (Bulkhead)
Außengewinde mit 24° Dichtkonus (Schottwand)

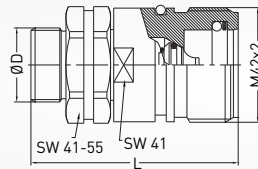
Ø12	M18x1.5	054.12 SUBM 18-12	73	26
Ø15	M22x1.5	054.12 SUBM 22-15	74	27
Ø18	M26x1.5	054.12 SUBM 26-18	74	27
Ø22	M30x2.0	054.12 SUBM 30-22	83	36
Ø16	M24x1.5	054.12 SUBM 24-16	76	29
Ø20	M30x2.0	054.12 SUBM 30-20	83	36

HYDRAULIC COUPLINGS
HYDRAULIK KUPPLUNGEN

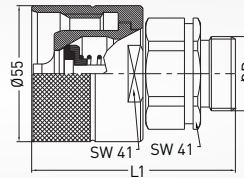
■ SERIE 054



054.20 Couplers / Muffe

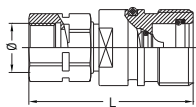


054.20 Plug / Stecker



Couplers / Muffe

Rohr Tube	Connection Anschlüsse	Order No Bestellnr.	L	L1
-----------	-----------------------	---------------------	---	----



Female thread DIN 3852
Innengewinde DIN 3852

BSP 3/4"	054.20 DGB 26	99	19
BSP 1"	054.20 DGB 33	99	19
NPT 1"	054.20 NGB 33	99	19

Interchangeability - Kompatibilität
VOSWINKEL - HS SERIE
FASTER - CVV SERIE

Temperature Range - Temperaturbereich
-20°C +100°C (-4°F +212°F)

Working Pressure - Betriebsdruck
0 - 300 bar (0 - 4350 PSI)

Flow capacity - Nennweite
NW - 25 mm

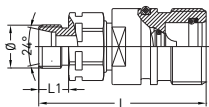
Standard version - Standardversion
Double Shut off - Beideseitig absperrbar
Steel - Stahl
Zinc Plated - Verzinkt
Nitrile (Ni) - NBR (Ni)
Screw to connect - Schraubverriegelung

Attention: Only plug and socket with the same thread fit together.
Achtung: Nur Nippel und Kupplungen mit demselben Gewinde passen zusammen

Fonctions
TST 054 series couplings are screw to connect type that can be used in heavy duty high pressureized hydraulics and industrial applications as well as in mobile applications with vibrations.

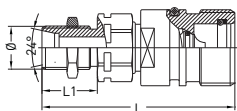
Technischer Merkmal
Die Serie TST 054 ist mit einer Schraubverriegelung ausgeführt und findet ihren Einsatz bei hohen Druckanwendungen.

Material - Material
Body-Grundkörper : Steel - Stahl
Valve - Ventil : Steel - Stahl
Springs - Federn : Spring Steel - Federstahl
Seals - Dichtungen : Buna - N - Buna N



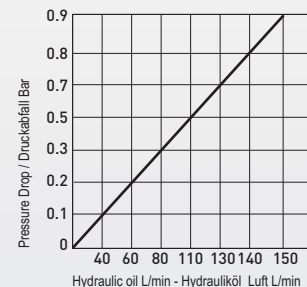
Male threaded sockets for hydraulic pipes with 24° taper according to DIN 3861
Außengewinde mit 24° Dichtkonus

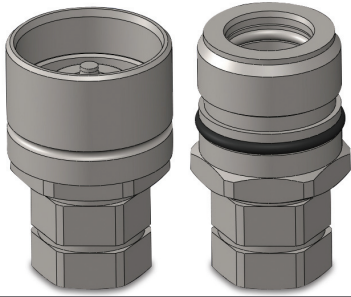
Ø18	M26x1.5	054.20 EGBM 26-18	95	12
Ø22	M30x2.0	054.20 EGBM 30-22	97	14
Ø28	M36x2.0	054.20 EGBM 36-28	97	14
Ø35	M45x2.0	054.20 EGBM 45-35	99	16
Ø20	M30x2.0	054.20 EGBM 30-20	99	16
Ø25	M36x2.0	054.20 EGBM 36-25	101	18
Ø30	M42x2.0	054.20 EGBM 42-30	103	20
Ø38	M52x2.0	054.20 EGBM 52-38	105	22



Male threaded sockets for hydraulic pipes with 24° taper according to DIN 3861 (Bulkhead)
Außengewinde mit 24° Dichtkonus (Schottwand)

Ø18	M26x1.5	054.20 SGBM 26-18	110	27
Ø22	M30x2.0	054.20 SGBM 30-22	115	32
Ø28	M36x2.0	054.20 SGBM 36-28	117	34
Ø35	M45x2.0	054.20 SGBM 45-35	117	34
Ø20	M30x2.0	054.20 SGBM 30-20	121	38
Ø25	M36x2.0	054.20 SGBM 36-25	121	38
Ø30	M42x2.0	054.20 SGBM 42-30	123	40
Ø38	M52x2.0	054.20 SGBM 52-38	123	40



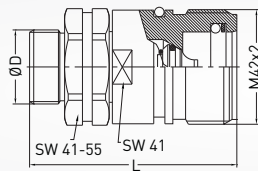


SERIE 054 ■

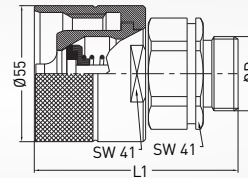
HYDRAULIC COUPLINGS
HYDRAULIK KUPPLUNGEN



054.20 Couplers / Muffe



054.20 Plug / Stecker



Interchangeability - Kompatibilität
VOSWINKEL - HS SERIE
FASTER - CVV SERIE

Temperature Range - Temperaturbereich
-20 °C +100 °C (-4 °F +212 °F)

Working Pressure - Betriebsdruck
0 - 300 bar (0 - 4350 PSI)

Flow capacity - Nennweite
NW - 25 mm

Standard version - Standardversion
Double Shut off - Beideseitig absperierbar
Steel - Stahl
Zinc Plated - Verzinkt
Nitrile (Ni) - NBR (Ni)
Screw to connect - Schraubverriegelung

Attention: Only plug and socket with the same thread fit together.

Achtung: Nur Nippel und Kupplungen mit demselben Gewinde passen zusammen

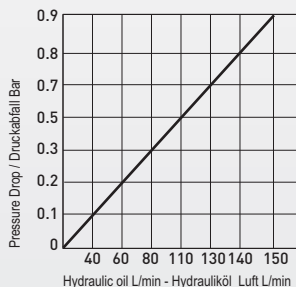
Fonctions

TST 054 series couplings are screw to connect type that can be used in heavy duty high pressureized hydraulics and industrial applications as well as in mobile applications with vibrations.

Technischer Merkmal
Die Serie TST 054 ist mit einer Schraubverriegelung ausgeführt und findet ihren Einsatz bei hohen Druckenwendungen.

Material - Material

Body-Grundkörper : Steel - Stahl
Valve - Ventil : Steel - Stahl
Springs - Federn : Spring Steel - Federstahl
Seals - Dichtungen : Buna - N - Buna N



Plugs / Stecker

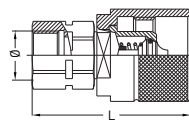
Rohr Tube

Connection Anschlüsse
Ø

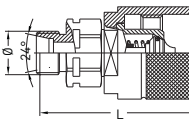
Order No Bestellnr.

L

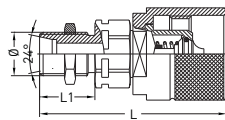
L1



Female thread DIN 3852
Innengewinde DIN 3852



Male threaded sockets for hydraulic pipes with 24° taper according to DIN 3861
Außengewinde mit 24° Dichtkonus



Male threaded sockets for hydraulic pipes with 24° taper according to DIN 3861 (Bulkhead)
Außengewinde mit 24° Dichtkonus (Schottwand)

BSP 3/4"	054.20 DUB 26	82	19
BSP 1"	054.20 DUB 33	82	19
NPT 1"	054.20 NUB 33	82	19

Ø18	M26x1.5	054.20 EUBM 26-18	69	12
Ø22	M30x2.0	054.20 EUBM 30-22	71	14
Ø28	M36x2.0	054.20 EUBM 36-28	71	14
Ø35	M45x2.0	054.20 EUBM 45-35	73	16
Ø20	M30x2.0	054.20 EUBM 30-20	73	16
Ø25	M36x2.0	054.20 EUBM 36-25	75	18
Ø30	M42x2.0	054.20 EUBM 42-30	77	20
Ø38	M52x2.0	054.20 EUBM 52-38	79	22

Ø18	M26x1.5	054.20 SUBM 26-18	84	27
Ø22	M30x2.0	054.20 SUBM 30-22	89	32
Ø28	M36x2.0	054.20 SUBM 36-28	91	34
Ø35	M45x2.0	054.20 SUBM 45-35	91	34
Ø20	M30x2.0	054.20 SUBM 30-20	95	38
Ø25	M36x2.0	054.20 SUBM 36-25	95	38
Ø30	M42x2.0	054.20 SUBM 42-30	97	40
Ø38	M52x2.0	054.20 SUBM 52-38	97	40