



SERIE 098 ■

COUPLINGS, MULTICOUPLINGS & MOULD COOLING PRODUCTS

KUPPLUNGEN, MULTIKUPPLUNGEN & KÜHLUNGSELEMENTE FÜR WERKZEUGE



ROBOTIC COUPLINGS ROBOTER KUPPLUNGEN

Interchangeability - Kompatibilität
STAUBLI SPM

ROBOTIC TOOL CHANGER COUPLERS
ROBOTER WERKZERGWECHSELSYSTEM
KUPPLUNG)

Working Pressure - Betriebsdruck
16 Bar - Standard

100 Bar - Stainless Steel - Edelstahl (AISI 303)

Standard version - Standardversion
Seal- Dichtungen : Florocarbon (V)

Material - Material

- Coupler & Plug body - Kupplungsgrundkörper & Nippel : Brass - Messing
- Valve - Ventil : Brass - Messing
- Springs - Federn : Stainless Steel - Edelstahl
- Seals - Dichtungen : Florocarbon (V)

Applications

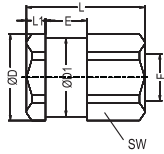
Multi couplers for the mould
Robotic tool changer couplers.

Anwendungen

Multikupplungssysteme
Roboter Werkzeugwechselsystem
Autokupplung

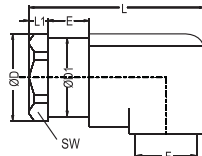
**Couplings
Kupplung**

Body Size Größen	Connection Anschlüsse F / Ø	Order No Bestellnr.	ØD	ØDI	L	LI	E	SW
---------------------	-----------------------------------	------------------------	----	-----	---	----	---	----



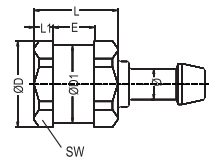
Female Threaded
Shut-off Coupler
Kupplung mit Innengewinde

08	BSP 3/8"	098.08 DGB 17	30	30	40.3	6.3	14	27
12	BSP 3/4"	098.12 DGB 26	42	42	43.8	6.3	14	38



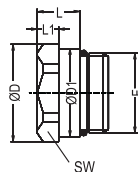
90° Female Threaded
Shut-off Coupler
Kupplung mit 90°
Innengewinde

08	BSP 3/8"	098.08 DGB 17-90	30	30	55.6	6.3	14	27
12	BSP 3/4"	098.12 DGB 26-90	42	42	59	6.3	14	38



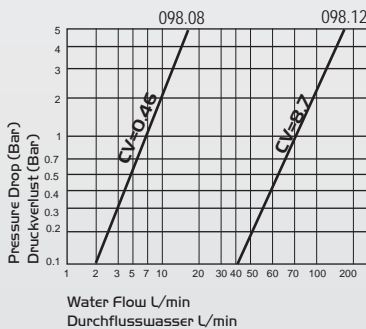
Hose Tail Shut-off Coupler
Kupplung mit Schlauchtülle

08	Ø 12	098.08 HGB 12	30	30	31.5	6.3	14	27
12	Ø 16	098.12 HGB 16	42	42	35	6.3	14	38



Male Threaded
Shut-off Coupler
Kupplung mit Aussengewinde

08	M24x1.5	098.08 EGBM 24	30	30	18.3	13		27
12	M33x1.5	098.12 EGBM 33	42	42	18.3	13		38



COUPLINGS, MULTICOUPLINGS & MOULD COOLING PRODUCTS

KUPPLUNGEN, MULTIKUPPLUNGEN & KÜHLUNGSELEMENTE FÜR WERKZEUGE

SERIE 098

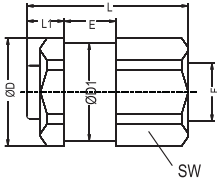


MANIFOLD & ROBOTIC COUPLINGS ROBOTER MULTIKUPPLUNGEN



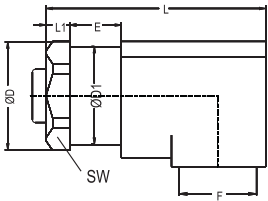
**Couplings
Kupplung**

Body Size Größen	Connection Anschlüsse F / Ø	Order No Bestellnr.	ØD	ØDI	L	LI	E	SW
---------------------	-----------------------------------	------------------------	----	-----	---	----	---	----



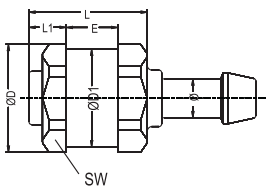
**Female Threaded Shut-off Coupler
Kupplung mit Innengewinde**

08	BSP 3/8"	098.08 DUB 17	30	27	45.5	11.5	14	27
12	BSP 3/4"	098.12 DUB 26	42	38	49.5	11.8	14	38



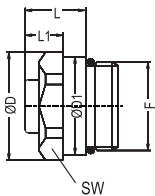
**90° Female Threaded Shut-off Coupler
Kupplung mit 90° Innengewinde**

08	BSP 3/8"	098.08 DUB 17-90	30	27	59	11.5	14	27
12	BSP 3/4"	098.12 DUB 26-90	42	38	63	11.8	14	38



**Hose Tail Shut-off Coupler
Kupplung mit Schlauchtülle**

08	Ø 12	098.08 HUB 12	30	27	36.7	11.5	14	27
12	Ø 16	098.12 HUB 16	42	38	40.5	11.8	14	38



**Male Threaded Shut-off Coupler
Kupplung mit Aussengewinde**

08	M24x1.5	098.08 EUBM 24	30	27	22	11.5		27
12	M33x1.5	098.12 EUBM 33	42	38	22	11.8		38

