



SERIE 106

HYDRAULIC COUPLINGS
HYDRAULIK KUPPLUNGEN



Standard & F Serie

Interchangeability - Kompatibilität
STAUBLI GPL

Temperature Range - Temperaturbereich
-20°C +100°C (-4°F +250°F)

Working Pressure - Betriebsdruck
0-10 bar (0-145 PSI)

Flow capacity - Nennweiten
NW - 106.25
NW - 106.33
Nw - 106.50

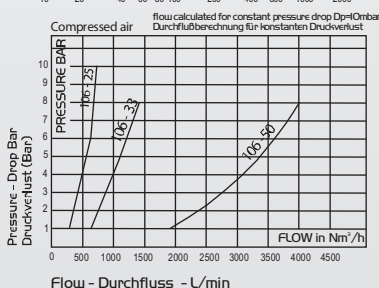
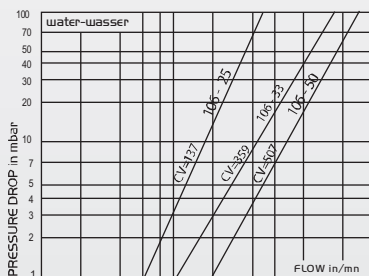
Standard version - Standardversion
Full Flow - Feier Durchfluss nicht absperbar
Chrome plated - Verchromt
Ni-Nitrile NBR

Options - Optionen
E - EPDM (Ethylene-propylene)
V - Fluorocarbhone Seal - Fluorocarbhone Dichtung

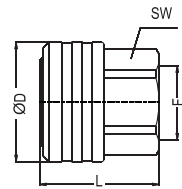
For optional orders please add the symbol of your option end of the order no.
Bei Bestellungen Kennbuchstabe bitte hinzufügen (Beispiel: 106.25 DGF 33-E-V)

Material - Material

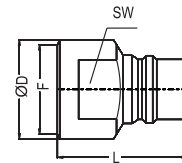
- Coupler body - Kupplungsgrundkörper :Brass Chrome Plated - Messing Verchromt
- Back Part - Hinterteil :Brass Nickel Plated - Messing Vernickelt
- Sleeve - Hülse :BrassChrome Plated - Messing Verchromt
- Springs - Federn :Stainless Steel - Edelstahl
- Locking O-Ring- Sprengring :Stainless Steel - Edelstahl
- Balls -Kugeln :Stainless Steel - Edelstahl
- Seals - Dichtungen :NBR - Nitrile
- Plug - Nippel :AlSI - 420 (hardened-Gehärtet)



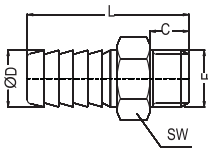
**Coupler and Plug
Kupplung und Nippel**



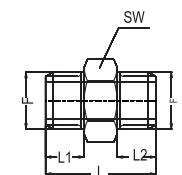
Socket female threaded
Kupplung mit Innengewinde



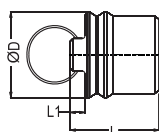
Female threaded plug
Nippel mit Innengewinde



Male threaded hose tail
(chromed brass)
Schlauchtülle mit Aussengewinde



Male/male adaptor
(chromed brass)
Doppelnippel mit Aussengewinde



Protective dust cap for socket
Schutzkappe

Body Size Nennweite	Connection Anschlüsse (F/Ø)	Order No Bestellnr.	C	d	SW	L	LI	L2
------------------------	-----------------------------------	------------------------	---	---	----	---	----	----

25	BSP 1"	106.25 DGF 33		57	46	57		
33	BSP 1.1/4"	106.33 DGF 42		65	54	62		
50	BSP 2"	106.50 DGF 60		89	77	70		

25	BSP 1"	106.25 DU 33		45	41	61		
33	BSP 1.1/4"	106.33 DU 42		55	50	66		
50	BSP 2"	106.50 DU 60		75	71	78		

25	BSP 1"	106.25 TAF 33	19	35	40	70		
33	BSP 1.1/4"	106.33 TAF 42	21	43	50	69		
50	BSP 2"	106.50 TAF 60	25	55	70	85		

25	BSP 1"	106.25 EE 33		40	50	19	19	
33	BSP 1.1/4"	106.33 EE 42		50	52	21	21	
50	BSP 2"	106.50 EE 60		70	65	25	25	

25		106.25 KG 33		34		41	10	
33		106.33 KG 42		42		46	10	
50		106.50 KG 60		60		55	10	