

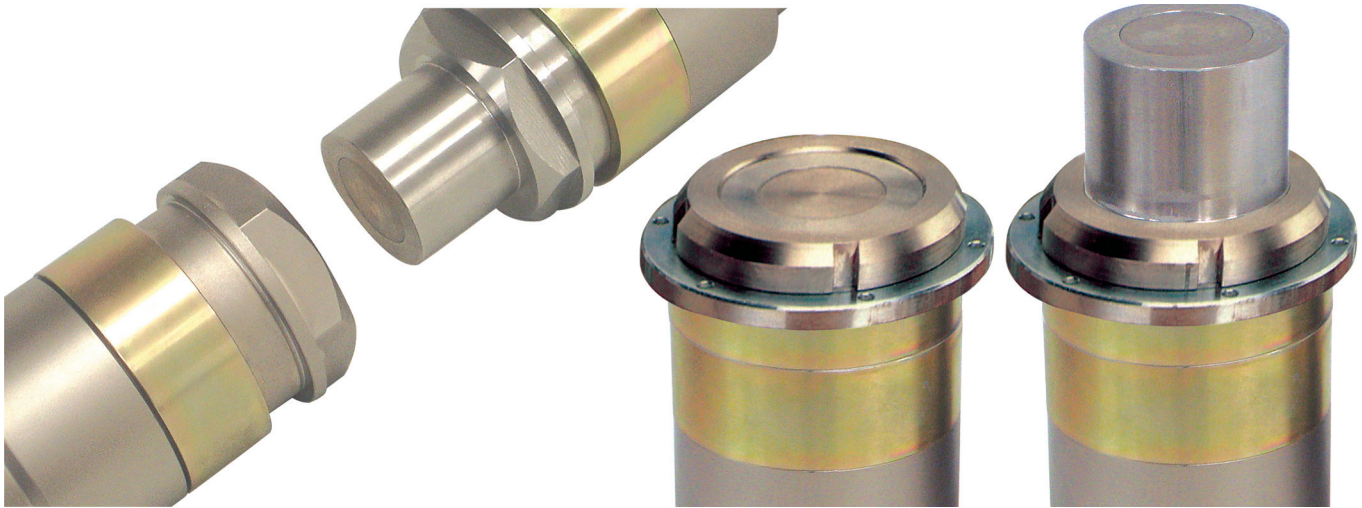
SERIE 104 ■

HYDRAULIC COUPLINGS
HYDRAULIK KUPPLUNGEN

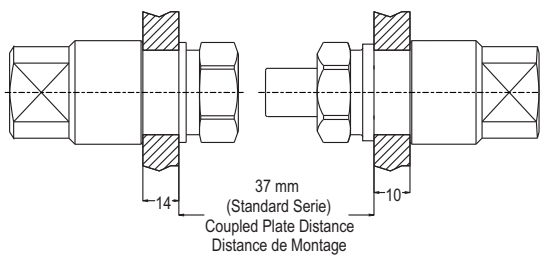


Interchangeability - Kompatibilität: STAUBLI SPH

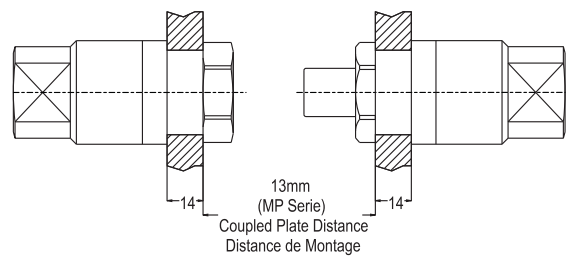
AUTOMATIC FLUSH FACED NON SPILL MULTI-COUPLINGS
FLACHDICHDENDE AUTOKUPPLUNG IN LECKSGEFREIER AUSFÜHRUNG



• Standard Serie 104.04 to 104.75



• MP Serie 104.04 to 104.25



HYDRAULIC COUPLINGS
HYDRAULIK KUPPLUNGEN

■ SERIE 104MP

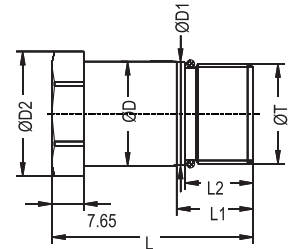


Interchangeability - Kompatibilität: STAUBLI SPH



Automatic Multi Couplings 104 with leakage free.
Coupling for multiple connection direct assembling systems.
Autokupplungen in leckagefreier Ausführung
Nippel für Multikupplung Direkteinbau

Male Threaded Direct
Assembling Sockets
Kupplung (für Direkteinbau)
mit Aussengewinde



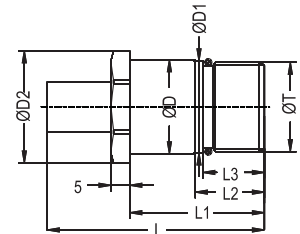
Coupling / Kupplung

104 MP Serie Direct Assembling Sockets
Kupplung für Direkteinbau

Body Size Nennweite	Connection Anschluß ØT	Order No - Bestellnr.		ØD	ØD1	ØD2	L	L1	L2	SW
		Standart Serie	High Pressure Serie Hochdruck Serie							
04	M20x1.5	104.04 EGBM 20MP	104.04 EGBM 20MP H4	21	20.5	25	47	14	11.7	22
06	M24x1.5	104.06 EGBM 24MP	104.06 EGBM 24MP H4	25	24.5	29	47	14	11.7	26
08	M27x1.5	104.08 EGBM 27MP	104.08 EGBM 27MP H4	28	27.5	33	49	15.5	13.5	29
12	M36x1.5	104.12 EGBM 36MP	104.12 EGBM 36MP H4	37	36.5	42	57	24	21.5	38
15	M42x1.5	104.15 EGBM 42MP	104.15 EGBM 42MP H4	43	42.5	47	68	24.5	22.5	42
20	M52x2.0	104.20 EGBM 52MP	104.20 EGBM 52MP H4	54	53	62	74.5	28.5	25.5	50
26	M64x2.0	104.25 EGBM 64MP	104.25 EGBM 64MP H4	66	65	75	96.5	36	32	55

Plug / Nippel

Male Threaded Direct
Assembling Plugs
Nippel (für Direkteinbau)
mit Aussengewinde



104 MP Serie Direct Assembling Plugs
Nippel für Direkteinbau

Body Size Nennweite	Connection Anschluß ØT	Order No - Bestellnr.		ØD	ØD1	ØD2	L	L1	L2	L3	SW
		Standart Serie	High Pressure Serie Hochdruck Serie								
04	M20x1.5	104.04 EUBM 20MP	104.04 EUBM 20MP H4	21	20.5	25	53.3	35	14	11.7	22
06	M24x1.5	104.06 EUBM 24MP	104.06 EUBM 24MP H4	25	24.5	29	55	35	14	11.7	26
08	M27x1.5	104.08 EUBM 27MP	104.08 EUBM 27MP H4	28	27.5	33	59	37	15.5	13.5	29
12	M36x1.5	104.12 EUBM 36MP	104.12 EUBM 36MP H4	37	36.5	42	72	45	24	21.5	38
15	M42x1.5	104.15 EUBM 42MP	104.15 EUBM 42MP H4	43	42.5	47	87	56	24.5	22.5	42
20	M52x2.0	104.20 EUBM 52MP	104.20 EUBM 52MP H4	54	53	62	97.5	62.5	28.5	25.5	50
26	M64x2.0	104.25 EUBM 64MP	104.25 EUBM 64MP H4	66	65	75	126.7	84.5	36	32	55

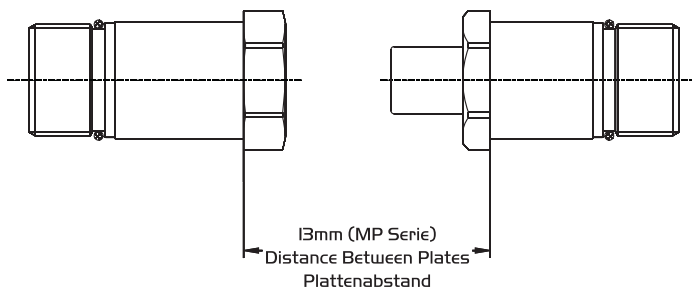


SERIE 104MP

HYDRAULIC COUPLINGS HYDRAULIK KUPPLUNGEN



Interchangeability - Kompatibilität: STAUBLI SPH

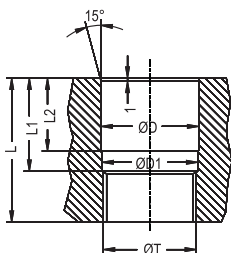


Automatic Multi Couplings 104 with leakage free. Plugs for multiple connection direct assembling systems. Autokupplungen in leckagefreier Ausführung Nippel für Multikupplung Direkteinbau



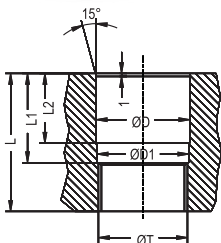
104 MP Serie Direct Assembling Sockets (Montage dimension) Kupplung für Direkteinbau mit Aussengewinde (Einbaumaße)

Body Size Nennweite	Connection Anschluß ØT	Order No - Bestellnr.		ØD G8	ØDI F8	L +0.1	LI +0.1	L2 +0.1
		Standart Serie	High Pressure Serie Hochdruck Serie					
04	M20x1.5	104.04 EGBM 20MP	104.04 EGBM 20MP H4	21.1	20.5		42	33
06	M24x1.5	104.06 EGBM 24MP	104.06 EGBM 24MP H4	25.1	24.5	29	42	33
08	M27x1.5	104.08 EGBM 27MP	104.08 EGBM 27MP H4	28.1	27.5	33	44.5	33
12	M36x1.5	104.12 EGBM 36MP	104.12 EGBM 36MP H4	37.1	36.5	42	52.5	33
15	M42x1.5	104.15 EGBM 42MP	104.15 EGBM 42MP H4	43.1	42.5	47	63.5	43
20	M52x2.0	104.20 EGBM 52MP	104.20 EGBM 52MP H4	54.1	53	62	70	46
26	M64x2.0	104.25 EGBM 64MP	104.25 EGBM 64MP H4	66.1	65	75	92	64



104 MP Serie Direct Assembling Plugs (Montage dimension) Nippel für Direkteinbau mit Aussengewinde (Einbaumaße)

Body Size Nennweite	Connection Anschluß ØT	Order No - Bestellnr.		ØD G8	ØDI F8	L +0.1	LI +0.1	L2 +0.1
		Standart Serie	High Pressure Serie Hochdruck Serie					
04	M20x1.5	104.04 EUBM 20MP	104.04 EUBM 20MP H4	21.1	20.5	38	28	21.5
06	M24x1.5	104.06 EUBM 24MP	104.06 EUBM 24MP H4	25.1	24.5	38	28	21.5
08	M27x1.5	104.08 EUBM 27MP	104.08 EUBM 27MP H4	28.1	27.5	40	28	21.5
12	M36x1.5	104.12 EUBM 36MP	104.12 EUBM 36MP H4	37.1	36.5	48	28	21.5
15	M42x1.5	104.15 EUBM 42MP	104.15 EUBM 42MP H4	43.1	42.5	59	38	31.5
20	M52x2.0	104.20 EUBM 52MP	104.20 EUBM 52MP H4	54.1	53	67	42	35
26	M64x2.0	104.25 EUBM 64MP	104.25 EUBM 64MP H4	66.1	65	88	60	50



HYDRAULIC COUPLINGS
HYDRAULIK KUPPLUNGEN

SERIE 104.04



Interchangeability - Kompatibilität: STAUBLI SPH



Coupling & Plug - Kupplung & Nippel

Nominal Ø(mm) - Nennweite Ø(mm)

Cross Section (mm²) - Querschnitt (mm²)

Max. Working Pressure - Max. Betriebsdruck
O-Ring (180°)

Material - Werkstoffe

Shut-off Type - Absperrbarkeit

Standard Serie

4

12.5

160 Bar FPM (Viton)

Stainless Steel - Edelstahl

H4 Serie

4

12.5

500 Bar FPM (Viton)

%17 Chromsteel
%17 Chromstahl

Double Shut-off - Beidseitig absperrend

Automatic Multi Couplings
104 with leakage free.

Application Area:

Hydraulic Liquids, Water, Oil and Diesel
For Example : Control Panels, Machinery for
production etc.

Use Area:

Automotive Industry, Air Industry
Machinery, Steel Industry, Plastic and
Rubber Industry.

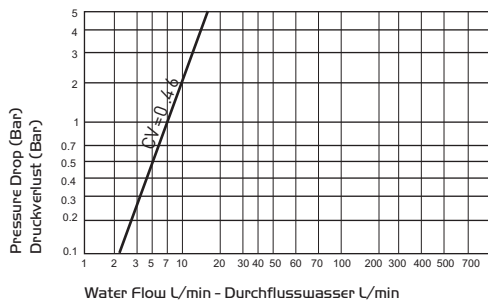
Automatische Multikupplungen 104 in
leckagefreier Ausführung.

Anwendungsbereiche:

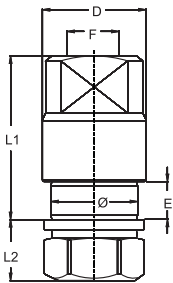
* Hydraulische Flüssigkeiten
* Wasser, Schmieröl, Benzin, Diesel...
z.B. an Prüfständen, Produktionsmaschinen etc.

Einsatzgebiete:

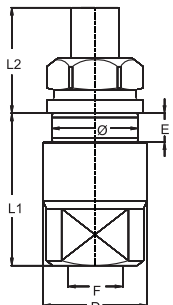
* Automobilbau, Luftfahrtindustrie
* Eisen- und Stahlindustrie, Maschinenbau
* Kunststoffindustrie und Aluminiumdruckguß



Coupling
Kupplung



Coupling Kupplung	Body Size Nennweite	Connection Anschluß F	Order No - Bestellnr.	L1 (mm)		L2 (mm)		D (mm)	Ø (mm)	E (mm)		Weight Gewicht (kg)
				Standart Serie	MP Serie	Standart Serie	MP Serie			Standart Serie	MP Serie	
	04	BSP 1/4"	104.04 DGB 13	45	57	20	8	25	21	14	14	0.167
	04	BSP 1/4"	104.04 DGB 13 H4	45	57	20	8	25	21	14	14	0.167
	04	BSPT1/4"	104.04 QGB 13	45	57	20	8	25	21	14	14	0.167
	04	BSPT1/4"	104.04 QGB 13 H4	45	57	20	8	25	21	14	14	0.167
	04	NPT 1/4"	104.04 NGB 13	45	57	20	8	25	21	14	14	0.167
	04	NPT 1/4"	104.04 NGB 13H4	45	57	20	8	25	21	14	14	0.167
	04	UNF 7/16-20	104.04 UGB 11	45	57	20	8	25	21	14	14	0.167
	04	UNF 7/16-20	104.04 UGB 11 H4	45	57	20	8	25	21	14	14	0.167



	04	BSP 1/4"	104.04 DUB 13	45	53	30.5	18.5	25	21	10	14	0.163
	04	BSP 1/4"	104.04 DUB 13 H4	45	53	30.5	18.5	25	21	10	14	0.163
	04	BSPT1/4"	104.04 QUB 13	45	53	30.5	18.5	25	21	10	14	0.163
	04	BSPT1/4"	104.04 QUB 13 H4	45	53	30.5	18.5	25	21	10	14	0.163
	04	NPT 1/4"	104.04 NUB 13	45	53	30.5	18.5	25	21	10	14	0.163
	04	NPT 1/4"	104.04 NUB 13 H4	45	53	30.5	18.5	25	21	10	14	0.163
	04	UNF 7/16-20	104.04 UUB 11	45	53	30.5	18.5	25	21	10	14	0.163
	04	UNF 7/16-20	104.04 UUB 11 H4	45	53	30.5	18.5	25	21	10	14	0.163



SERIE 104.06

HYDRAULIC COUPLINGS HYDRAULIK KUPPLUNGEN



Interchangeability - Kompatibilität: STAUBLI SPH

**Automatic Multi Couplings
104 with leakage free.**

Application Area:

Hydraulic Liquids, Water, Oil and Diesel
For Example : Control Panels, Machinery for production etc.

Use Area:

Automotive Industry, Air Industry
Machinery, Steel Industry, Plastic and Rubber Industry.

**Automatische Multikupplungen 104 in
leckagefreier Ausführung.**

Anwendungsbereiche:

* Hydraulische Flüssigkeiten
* Wasser, Schmieröl, Benzin, Diesel...
z.B. an Prüfständen, Produktionsmaschinen etc.

Einsatzgebiete:

* Automobilbau, Luftfahrtindustrie
* Eisen- und Stahlindustrie, Maschinenbau
* Kunststoffindustrie und Aluminiumdruckguß

Coupling & Plug - Kupplung & Nippel

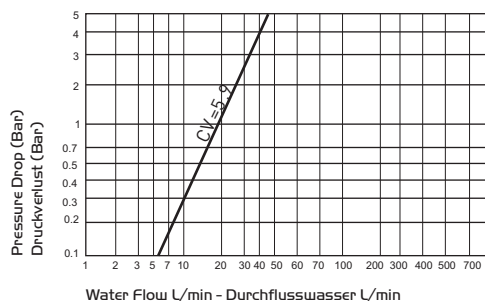
Nominal Ø(mm) - Nennweite Ø(mm)	6
Cross Section (mm ²) - Querschnitt (mm ²)	28
Max. Working Pressure - Max. Betriebsdruck O-Ring (180°)	160 Bar FPM (Viton)
Material - Werkstoffe	Stainless Steel - Edelstahl
Shut-off Type - Absperrbarkeit	Double Shut-off - Beidseitig absperrend

Standard Serie

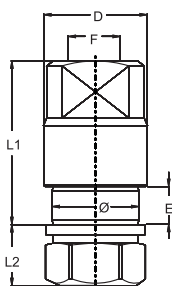
Nominal Ø(mm) - Nennweite Ø(mm)	6
Cross Section (mm ²) - Querschnitt (mm ²)	28
Max. Working Pressure - Max. Betriebsdruck O-Ring (180°)	160 Bar FPM (Viton)
Material - Werkstoffe	Stainless Steel - Edelstahl

H4 Serie

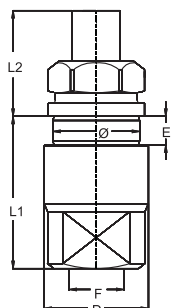
Nominal Ø(mm) - Nennweite Ø(mm)	6
Cross Section (mm ²) - Querschnitt (mm ²)	28
Max. Working Pressure - Max. Betriebsdruck O-Ring (180°)	500 Bar FPM (Viton)
Material - Werkstoffe	%17 Chromsteel %17 Chromstahl



**Coupling
Kupplung**



Body Size Nennweite	Connection Anschluß F	Order No - Bestellnr.	L1 (mm)		L2 (mm)		D (mm)	Ø (mm)	E (mm)		Weight Gewicht (kg)
			Standart Serie	MP Serie	Standart Serie	MP Serie			Standart Serie	MP Serie	
06	BSP 3/8"	104.06 DGB 17	46.5	58.5	20	8	29	25	14	14	0.225
06	BSP 3/8"	104.06 DGB 17 H4	46.5	58.5	20	8	29	25	14	14	0.225
06	BSPT3/8"	104.06 QGB 17	46.5	58.5	20	8	29	25	14	14	0.225
06	BSPT3/8"	104.06 QGB 17 H4	46.5	58.5	20	8	29	25	14	14	0.225
06	NPT 3/8"	104.06 NGB 17	46.5	58.5	20	8	29	25	14	14	0.225
06	NPT 3/8"	104.06 NGB 17 H4	46.5	58.5	20	8	29	25	14	14	0.225
06	UNF 1/2-20	104.06 UGB 13	46.5	58.5	20	8	29	25	14	14	0.225
06	UNF 1/2-20	104.06 UGB 13 H4	46.5	58.5	20	8	29	25	14	14	0.225



06	BSP 3/8"	104.06 DUB 17	42.5	54.5	32	20	29	25	10	14	0.225
06	BSP 3/8"	104.06 DUB 17 H4	42.5	54.5	32	20	29	25	10	14	0.225
06	BSPT3/8"	104.06 QUB 17	42.5	54.5	32	20	29	25	10	14	0.225
06	BSPT3/8"	104.06 QUB 17 H4	42.5	54.5	32	20	29	25	10	14	0.225
06	NPT 3/8"	104.06 NUB 17	42.5	54.5	32	20	29	25	10	14	0.225
06	NPT 3/8"	104.06 NUB 17 H4	42.5	54.5	32	20	29	25	10	14	0.225
06	UNF 1/2-20	104.06 UUB 13	42.5	54.5	32	20	29	25	10	14	0.225
06	UNF 1/2-20	104.06 UUB 13 H4	42.5	54.5	32	20	29	25	10	14	0.225

HYDRAULIC COUPLINGS
HYDRAULIK KUPPLUNGEN

SERIE 104.08



Interchangeability - Kompatibilität: STAUBLI SPH



Coupling & Plug - Kupplung & Nippel

Nominal Ø(mm) - Nennweite Ø(mm)

Cross Section (mm²) - Querschnitt (mm²)

Max. Working Pressure - Max. Betriebsdruck
O-Ring (180°)

Material - Werkstoffe

Shut-off Type - Absperrbarkeit

Standard Serie

8

50

160 Bar FPM (Viton)

Stainless Steel - Edelstahl

H4 Serie

8

50

500 Bar FPM (Viton)

%17 Chromsteel
%17 Chromstahl

Double Shut-off - Beidseitig absperrend

Automatic Multi Couplings
104 with leakage free.

Application Area:

Hydraulic Liquids, Water, Oil and Diesel
For Example : Control Panels, Machinery for production etc.

Use Area:

Automotive Industry, Air Industry
Machinery, Steel Industry, Plastic and Rubber Industry.

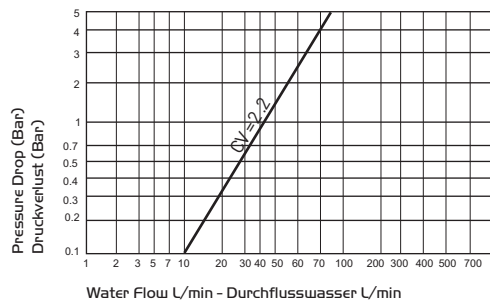
Automatische Multikupplungen 104 in
leckagefreier Ausführung.

Anwendungsbereiche:

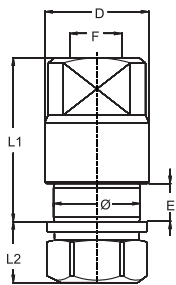
* Hydraulische Flüssigkeiten
* Wasser, Schmieröl, Benzin, Diesel...
z.B. an Prüfständen, Produktionsmaschinen etc.

Einsatzgebiete:

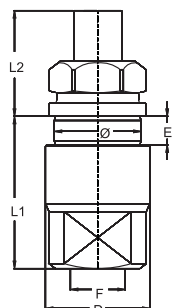
* Automobilbau, Luftfahrtindustrie
* Eisen- und Stahlindustrie, Maschinenbau
* Kunststoffindustrie und Aluminiumdruckguß



Coupling
Kupplung



Body Size Nennweite	Connection Anschluß F	Order No - Bestellnr.	L1 (mm)		L2 (mm)		D (mm)	Ø (mm)	E (mm)		Weight Gewicht (kg)
			Standart Serie	MP Serie	Standart Serie	MP Serie			Standart Serie	MP Serie	
08	BSP 1/2"	104.08 DGB 21	52.5	64.5	20	8	33	28	14	14	0.310
08	BSP 1/2"	104.08 DGB 21 H4	52.5	64.5	20	8	33	28	14	14	0.310
08	BSPT 1/2"	104.08 QGB 21	52.5	64.5	20	8	33	28	14	14	0.310
08	BSPT 1/2"	104.08 QGB 21 H4	52.5	64.5	20	8	33	28	14	14	0.310
08	NPT 1/2"	104.08 NGB 21	52.5	64.5	20	8	33	28	14	14	0.310
08	NPT 1/2"	104.08 NGB 21 H4	52.5	64.5	20	8	33	28	14	14	0.310
08	UNF 9/16-18	104.08 UGB 14	52.5	64.5	20	8	33	28	14	14	0.310
08	UNF 9/16-18	104.08 UGB 14 H4	52.5	64.5	20	8	33	28	14	14	0.310



08	BSP 1/2"	104.08 DUB 21	48.5	60.5	34	22	33	28	10	14	0.310
08	BSP 1/2"	104.08 DUB 21 H4	48.5	60.5	34	22	33	28	10	14	0.310
08	BSPT 1/2"	104.08 QUB 21	48.5	60.5	34	22	33	28	10	14	0.310
08	BSPT 1/2"	104.08 QUB 21 H4	48.5	60.5	34	22	33	28	10	14	0.310
08	NPT 1/2"	104.08 NUB 21	48.5	60.5	34	22	33	28	10	14	0.310
08	NPT 1/2"	104.08 NUB 21 H4	48.5	60.5	34	22	33	28	10	14	0.310
08	UNF 9/16-18	104.08 UUB 14	48.5	60.5	34	22	33	28	10	14	0.310
08	UNF 9/16-18	104.08 UUB 14 H4	48.5	60.5	34	22	33	28	10	14	0.310



SERIE 104.12

HYDRAULIC COUPLINGS HYDRAULIK KUPPLUNGEN



Interchangeability - Kompatibilität: STAUBLI SPH

**Automatic Multi Couplings
104 with leakage free.**

Application Area:
Hydraulic Liquids, Water, Oil and Diesel
For Example : Control Panels, Machinery for
production etc.

Use Area:
Automotive Industry, Air Industry
Machinery, Steel Industry, Plastic and
Rubber Industry.

**Automatische Multikupplungen 104 in
leckagefreier Ausführung.**

Anwendungsbereiche:
* Hydraulische Flüssigkeiten
* Wasser, Schmieröl, Benzin, Diesel...
z.B. an Prüfständen, Produktionsmaschinen etc.

Einsatzgebiete:
* Automobilbau, Luftfahrtindustrie
* Eisen- und Stahlindustrie, Maschinenbau
* Kunststoffindustrie und Aluminiumdruckguß

Coupling & Plug - Kupplung & Nippel

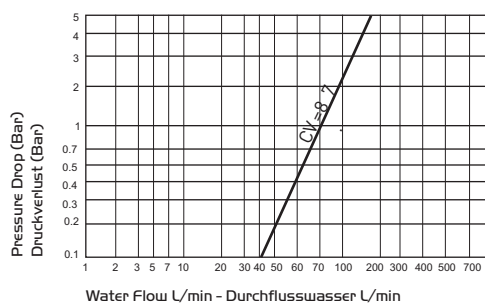
Nominal Ø(mm) - Nennweite Ø(mm)	12
Cross Section (mm ²) - Querschnitt (mm ²)	113
Max. Working Pressure - Max. Betriebsdruck O-Ring (180°)	160 Bar FPM (Viton)
Material - Werkstoffe	Stainless Steel - Edelstahl
Shut-off Type - Absperrbarkeit	Double Shut-off - Beidseitig absperrend

Standard Serie

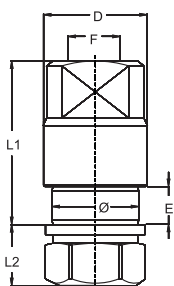
Nominal Ø(mm) - Nennweite Ø(mm)	12
Cross Section (mm ²) - Querschnitt (mm ²)	113
Max. Working Pressure - Max. Betriebsdruck O-Ring (180°)	160 Bar FPM (Viton)
Material - Werkstoffe	Stainless Steel - Edelstahl

H4 Serie

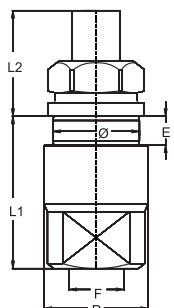
Nominal Ø(mm) - Nennweite Ø(mm)	12
Cross Section (mm ²) - Querschnitt (mm ²)	113
Max. Working Pressure - Max. Betriebsdruck O-Ring (180°)	250 Bar FPM (Viton)
Material - Werkstoffe	%17 Chromsteel %17 Chromstahl



Coupling Kupplung



Body Size Nennweite	Connection Anschluß F	Order No - Bestellnr.	L1 (mm)		L2 (mm)		D (mm)	Ø (mm)	E (mm)		Weight Gewicht (kg)
			Standart Serie	MP Serie	Standart Serie	MP Serie			Standart Serie	MP Serie	
12	BSP 3/4"	104.12 DGB 26	62.5	74.5	20	8	44	43	14	14	0.820
12	BSP 3/4"	104.12 DGB 26 H4	62.5	74.5	20	8	44	43	14	14	0.820
12	BSPT3/4"	104.12 QGB 26	62.5	74.5	20	8	44	43	14	14	0.820
12	BSPT3/4"	104.12 QGB 26 H4	62.5	74.5	20	8	44	43	14	14	0.820
12	NPT 3/4"	104.12 NGB 26	62.5	74.5	20	8	44	43	14	14	0.820
12	NPT 3/4"	104.12 NGB 26 H4	62.5	74.5	20	8	44	43	14	14	0.820
12	UNF 7/8-14	104.12 UGB 22	62.5	74.5	20	8	44	43	14	14	0.820
12	UNF 7/8-14	104.12 UGB 22 H4	62.5	74.5	20	8	44	43	14	14	0.820



12	BSP 3/4"	104.12 DUB 26	58.5	70.5	39	27	44	43	10	14	0.900
12	BSP 3/4"	104.12 DUB 26 H4	58.5	70.5	39	27	44	43	10	14	0.900
12	BSPT3/4"	104.12 QUB 26	58.5	70.5	39	27	44	43	10	14	0.900
12	BSPT3/4"	104.12 QUB 26 H4	58.5	70.5	39	27	44	43	10	14	0.900
12	NPT 3/4"	104.12 NUB 26	58.5	70.5	39	27	44	43	10	14	0.900
12	NPT 3/4"	104.12 NUB 26 H4	58.5	70.5	39	27	44	43	10	14	0.900
12	UNF 7/8-14	104.12 UUB 22	58.5	70.5	39	27	44	43	10	14	0.900
12	UNF 7/8-14	104.12 UUB 22 H4	58.5	70.5	39	27	44	43	10	14	0.900

HYDRAULIC COUPLINGS
HYDRAULIK KUPPLUNGEN

■ SERIE 104.15



Interchangeability - Kompatibilität: STAUBLI SPH



Coupling & Plug - Kupplung & Nippel

Nominal Ø(mm) - Nennweite Ø(mm)

Cross Section (mm²) - Querschnitt (mm²)

Max. Working Pressure - Max. Betriebsdruck
O-Ring (180°)

Material - Werkstoffe

Shut-off Type - Absperrbarkeit

Standard Serie

15

176.5

160 Bar FPM (Viton)

Stainless Steel - Edelstahl

H4 Serie

15

176.5

250 Bar FPM (Viton)

%17 Chromsteel
%17 Chromstahl

Double Shut-off - Beidseitig absperrend

Automatic Multi Couplings
104 with leakage free.

Application Area:

Hydraulic Liquids, Water, Oil and Diesel
For Example : Control Panels, Machinery for
production etc.

Use Area:

Automotive Industry, Air Industry
Machinery, Steel Industry, Plastic and
Rubber Industry.

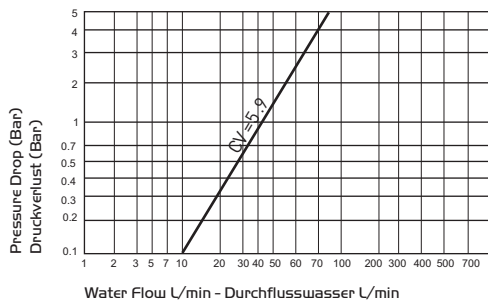
Automatische Multikupplungen 104 in
leckagefreier Ausführung.

Anwendungsbereiche:

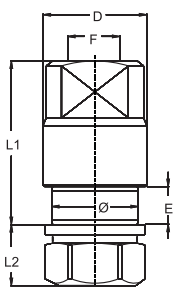
* Hydraulische Flüssigkeiten
* Wasser, Schmieröl, Benzin, Diesel...
z.B. an Prüfständen, Produktionsmaschinen etc.

Einsatzgebiete:

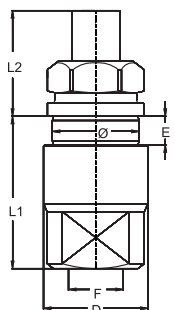
* Automobilbau, Luftfahrtindustrie
* Eisen- und Stahlindustrie, Maschinenbau
* Kunststoffindustrie und Aluminiumdruckguß



Coupling
Kupplung



Body Size Nennweite	Connection Anschluß F	Order No - Bestellnr.	L1 (mm)	L2 (mm)	D (mm)	Ø (mm)	E (mm)	Weight Gewicht (kg)
15	BSP 3/4"	104.15 DGB 26	73	20	50	43	14	0.820
15	BSP 3/4"	104.15 DGB 26 H4	73	20	50	43	14	0.820
15	BSPT3/4"	104.15 QGB 26	73	20	50	43	14	0.820
15	BSPT3/4"	104.15 QGB 26 H4	73	20	50	43	14	0.820
15	NPT 3/4"	104.15 NGB 26	73	20	50	43	14	0.820
15	NPT 3/4"	104.15 NGB 26 H4	73	20	50	43	14	0.820
15	UNF 1"1/16-12	104.15 UGB 27	73	20	50	43	14	0.820
15	UNF 1"1/16-12	104.15 UGB 27 H4	73	20	50	43	14	0.820



15	BSP 3/4"	104.15 DUB 26	69	43	50	43	10	0.900
15	BSP 3/4"	104.15 DUB 26 H4	69	43	50	43	10	0.900
15	BSPT 3/4"	104.15 QUB 26	69	43	50	43	10	0.900
15	BSPT 3/4"	104.15 QUB 26 H4	69	43	50	43	10	0.900
15	NPT 3/4"	104.15 NUB 26	69	43	50	43	10	0.900
15	NPT 3/4"	104.15 NUB 26 H4	69	43	50	43	10	0.900
15	UNF 1"1/16-12	104.15 UUB 27	69	43	50	43	10	0.900
15	UNF 1"1/16-12	104.15 UUB 27 H4	69	43	50	43	10	0.900



SERIE 104.20

HYDRAULIC COUPLINGS
HYDRAULIK KUPPLUNGEN



Interchangeability - Kompatibilität: STAUBLI SPH

**Automatic Multi Couplings
104 with leakage free.**

Application Area:
Hydraulik Liquids, Water, Oil and Diesel
For Example : Control Panels, Machinery for
production etc.

Use Area:
Automotive Industry, Air Industry
Machinery, Steel Industry, Plastic and
Rubber Industry.

**Automatische Multikupplungen 104 in
leckagefreier Ausführung.**

Anwendungsbereiche:
* Hydraulische Flüssigkeiten
* Wasser, Schmieröl, Benzin, Diesel...
z.B. an Prüfständen, Produktionsmaschinen etc.

Einsatzgebiete:
* Automobilbau, Luftfahrtindustrie
* Eisen- und Stahlindustrie, Maschinenbau
* Kunststoffindustrie und Aluminiumdruckguß

Coupling & Plug - Kupplung & Nippel

Nominal Ø(mm) - Nennweite Ø(mm)
Cross Section (mm²) - Querschnitt (mm²)
Max. Working Pressure - Max. Betriebsdruck
O-Ring (180°)
Material - Werkstoffe
Shut-off Type - Absperrbarkeit

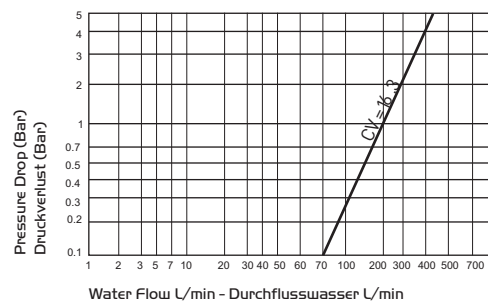
Standard Serie

20
314
160 Bar FPM (Viton)
Stainless Steel - Edelstahl

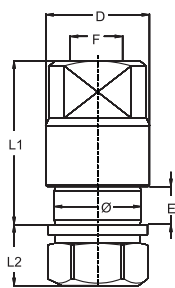
H4 Serie

20
314
250 Bar FPM (Viton)
%17 Chromsteel
%17 Chromstahl

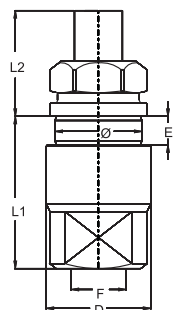
Double Shut-off - Beidseitig absperrend



**Coupling
Kupplung**



Body Size Nennweite	Connection Anschluß F	Order No - Bestellnr.	L1 (mm)	L2 (mm)	D (mm)	Ø (mm)	E (mm)	Weight Gewicht (kg)
20	BSP 1"	104.20 DGB 33	86	20	62	54	14	1.550
20	BSP 1"	104.20 DGB 33 H4	86	20	62	54	14	1.550
20	BSPT1"	104.20 QGB 33	86	20	62	54	14	1.550
20	BSPT1"	104.20 QGB 33 H4	86	20	62	54	14	1.550
20	NPT 1"	104.20 NGB 33	86	20	62	54	14	1.550
20	NPT 1"	104.20 NGB 33 H4	86	20	62	54	14	1.550
20	UNF 1"5/16-12	104.20 UGB 33	86	20	62	54	14	1.550
20	UNF 1"5/16-12	104.20 UGB 33 H4	86	20	62	54	14	1.550



20	BSP 1"	104.20 DUB 26	82	45	62	54	10	1.660
20	BSP 1"	104.20 DUB 26 H4	82	45	62	54	10	1.660
20	BSPT1"	104.20 QUB 26	82	45	62	54	10	1.660
20	BSPT1"	104.20 QUB 26 H4	82	45	62	54	10	1.660
20	NPT 1"	104.22 NUB 26	82	45	62	54	10	1.660
20	UNF 1"5/16-12	104.20 UUB 33	82	45	62	54	10	1.660
20	UNF 1"5/16-12	104.20 UUB 33 H4	82	45	62	54	10	1.660

HYDRAULIC COUPLINGS
HYDRAULIK KUPPLUNGEN

SERIE 104.25



Interchangeability - Kompatibilität: STAUBLI SPH



Coupling & Plug - Kupplung & Nippel

Nominal Ø(mm) - Nennweite Ø(mm)
Cross Section (mm²) - Querschnitt (mm²)
Max. Working Pressure - Max. Betriebsdruck
O-Ring (180°)
Material - Werkstoffe
Shut-off Type - Absperrbarkeit

Standard Serie

25
490.5
160 Bar FPM (Viton)
Stainless Steel - Edelstahl

H4 Serie

25
490.5
250 Bar FPM (Viton)
%17 Chromsteel
%17 Chromstahl

Double Shut-off - Beidseitig absperrend

Automatic Multi Couplings
104 with leakage free.

Application Area:

Hydraulic Liquids, Water, Oil and Diesel
For Example : Control Panels, Machinery for production etc.

Use Area:

Automotive Industry, Air Industry
Machinery, Steel Industry, Plastic and Rubber Industry.

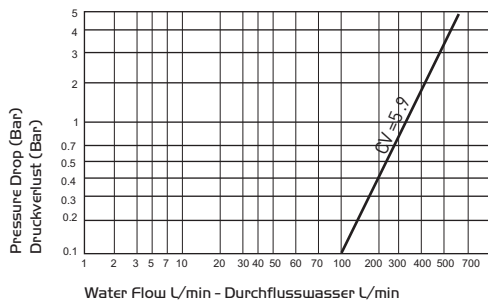
Automatische Multikupplungen 104 in
leckagefreier Ausführung.

Anwendungsbereiche:

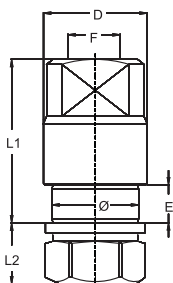
* Hydraulische Flüssigkeiten
* Wasser, Schmieröl, Benzin, Diesel...
z.B. an Prüfständen, Produktionsmaschinen etc.

Einsatzgebiete:

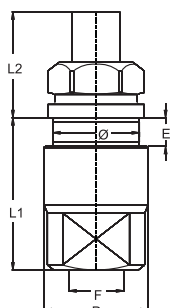
* Automobilbau, Luftfahrtindustrie
* Eisen- und Stahlindustrie, Maschinenbau
* Kunststoffindustrie und Aluminiumdruckguß



Coupling
Kupplung



Body Size Nennweite	Connection Anschluß F	Order No - Bestellnr.	L1 (mm)	L2 (mm)	D (mm)	Ø (mm)	E (mm)	Weight Gewicht (kg)
25	BSP 1"1/4"	104.25 DGB 42	108	20	75	66	14	2.600
25	BSP 1"1/4"	104.25 DGB 42 H4	108	20	75	66	14	2.600
25	BSPT1"1/4"	104.25 QGB 42	108	20	75	66	14	2.600
25	BSPT1"1/4"	104.25 QGB 42 H4	108	20	75	66	14	2.600
25	NPT 1"1/4"	104.25 NGB 42	108	20	75	66	14	2.600
25	NPT 1"1/4"	104.25 NGB 42 H4	108	20	75	66	14	2.600
25	UNF 1"5/8-12	104.25 UGB 41	108	20	75	66	14	2.600
25	UNF 1"5/8-12	104.25 UGB 41 H4	108	20	75	66	14	2.600



25	BSP 1"1/4"	104.25 DUB 42	104	54	75	66	10	2.900
25	BSP 1"1/4"	104.25 DUB 42 H4	104	54	75	66	10	2.900
25	BSPT1"1/4"	104.25 QUB 42	104	54	75	66	10	2.900
25	BSPT1"1/4"	104.25 QUB 42 H4	104	54	75	66	10	2.900
25	NPT 1"1/4"	104.25 NUB 42	104	54	75	66	10	2.900
25	NPT 1"1/4"	104.25 NUB 42 H4	104	54	75	66	10	2.900
25	UNF 1"5/8-12	104.25 UUB 41	104	54	75	66	10	2.900
25	UNF 1"5/8-12	104.25 UUB 41 H4	104	54	75	66	10	2.900



SERIE 104.37

HYDRAULIC COUPLINGS HYDRAULIK KUPPLUNGEN



Interchangeability - Kompatibilität: STAUBLI SPH

Automatic Multi Couplings 104 with leakage free.

Application Area:

Hydraulik Liquids, Water, Oil and Diesel
For Example : Control Panels, Machinery for production etc.

Use Area:

Automotive Industry, Air Industry
Machinery, Steel Industry, Plastic and
Rubber Industry.

Automatische Multikupplungen 104 in leckagefreier Ausführung.

Anwendungsbereiche:

* Hydraulische Flüssigkeiten
* Wasser, Schmieröl, Benzin, Diesel...
z.B. an Prüfständen, Produktionsmaschinen etc.

Einsatzgebiete:

* Automobilbau, Luftfahrtindustrie
* Eisen- und Stahlindustrie, Maschinenbau
* Kunststoffindustrie und Aluminiumdruckguß

Coupling & Plug - Kupplung & Nippel

Nominal Ø(mm) - Nennweite Ø(mm)

Cross Section (mm²) - Querschnitt (mm²)

Max. Working Pressure - Max. Betriebsdruck
O-Ring (180°)

Material - Werkstoffe

Coupler Body
Kupplungsgehäuse

Shut-off Type
Absperbarkeit

Plug Body
Steckergehäuse

Standard Serie - Standardausführung

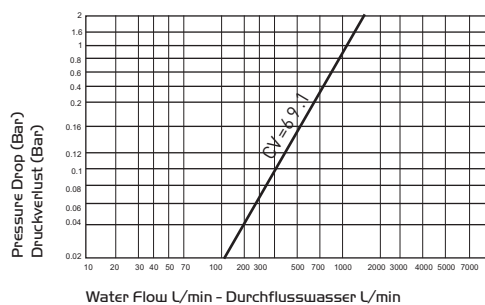
37

1074.5

16 Bar FPM (Viton)

Brass Nickelplated - Messing Vernickelt
Stainless Steel - Edelstahl

Double Shut-off - Beidseitig absperrend



Coupling Kupplung

Body Size
Nennweite

Connection
Anschluß
F

Order No - Bestellnr.

L1
(mm)

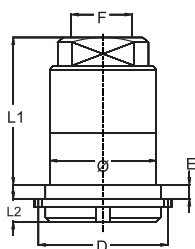
L2
(mm)

D
(mm)

Ø
(mm)

E
(mm)

Weight
Gewicht
(kg)



37

BSP 1"1/2

104.37 DGB 48

151

20

108

96

16

5.600

37

NPT 1"1/2

104.37 NGB 48

151

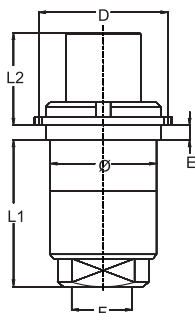
20

108

96

16

5.600



37

BSP 1"1/2

104.37 DUB 48

147

72

108

96

16

6.100

37

NPT 1"1/2

104.37 NUB 48

147

72

108

96

16

6.100

HYDRAULIC COUPLINGS
HYDRAULIK KUPPLUNGEN

■ SERIE 104.50

Interchangeability - Kompatibilität: STAUBLI SPH



Coupling & Plug - Kupplung & Nippel

Nominal Ø(mm) - Nennweite Ø(mm)

Cross Section (mm²) - Querschnitt (mm²)

Max. Working Pressure - Max. Betriebsdruck
O-Ring (180°)

Material - Werkstoffe | Coupler Body
Kupplungsgehäuse

Shut-off Type
Absperbarkeit | Plug Body
Steckergehäuse

Standard Serie - Standardausführung

50

1962.5

16 Bar FPM (Viton)

Brass Nickelplated - Messing Vernickelt
Stainless Steel - Edelstahl

Double Shut-off - Beidseitig absperrend

Automatic Multi Couplings
104 with leakage free.

Application Area:

Hydraulic Liquids, Water, Oil and Diesel
For Example : Control Panels, Machinery for
production etc.

Use Area:

Automotive Industry, Air Industry
Machinery, Steel Industry, Plastic and
Rubber Industry.

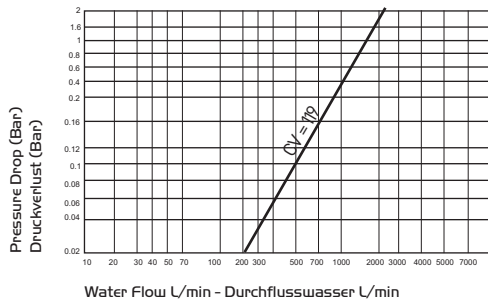
Automatische Multikupplungen 104 in
leckagefreier Ausführung.

Anwendungsbereiche:

* Hydraulische Flüssigkeiten
* Wasser, Schmieröl, Benzin, Diesel...
z.B. an Prüfständen, Produktionsmaschinen etc.

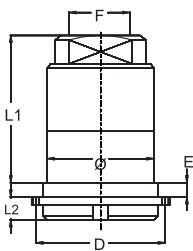
Einsatzgebiete:

* Automobilbau, Luftfahrtindustrie
* Eisen- und Stahlindustrie, Maschinenbau
* Kunststoffindustrie und Aluminiumdruckguß



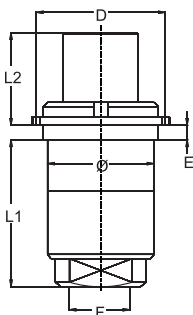
Coupling
Kupplung

Body Size Nennweite	Connection Anschluß F	Order No - Bestellnr.	L1 (mm)	L2 (mm)	D (mm)	Ø (mm)	E (mm)	Weight Gewicht (kg)
------------------------	-----------------------------	-----------------------	------------	------------	-----------	-----------	-----------	---------------------------



50	BSP 2"	104.50 DGB 60	170	20	136	124	16	11.700
----	--------	---------------	-----	----	-----	-----	----	--------

50	NPT 2"	104.50 NGB 60	170	20	136	124	16	11.700
----	--------	---------------	-----	----	-----	-----	----	--------



50	BSP 2"	104.50 DUB 60	174	86	136	124	16	12.800
----	--------	---------------	-----	----	-----	-----	----	--------

50	NPT 2"	104.50 NUB 60	174	86	136	124	16	12.800
----	--------	---------------	-----	----	-----	-----	----	--------



SERIE 104.75 ■

HYDRAULIC COUPLINGS
HYDRAULIK KUPPLUNGEN



Interchangeability - Kompatibilität: STAUBLI SPH

**Automatic Multi Couplings
104 with leakage free.**

Application Area:

Hydraulik Liquids, Water, Oil and Diesel
For Example : Control Panels, Machinery for production etc.

Use Area:

Automotive Industry, Air Industry
Machinery, Steel Industry, Plastic and
Rubber Industry.

**Automatische Multikupplungen 104 in
leckagefreier Ausführung.**

Anwendungsbereiche:

* Hydraulische Flüssigkeiten
* Wasser, Schmieröl, Benzin, Diesel...
z.B. an Prüfständen, Produktionsmaschinen etc.

Einsatzgebiete:

* Automobilbau, Luftfahrtindustrie
* Eisen- und Stahlindustrie, Maschinenbau
* Kunststoffindustrie und Aluminiumdruckguß

Coupling & Plug - Kupplung & Nippel

Nominal Ø(mm) - Nennweite Ø(mm)

Cross Section (mm²) - Querschnitt (mm²)

Max. Working Pressure - Max. Betriebsdruck
O-Ring (180°)

Material - Werkstoffe | Coupler Body
Kupplungsgehäuse

Shut-off Type | Plug Body
Absperbarkeit | Steckergehäuse

Standard Serie - Standardausführung

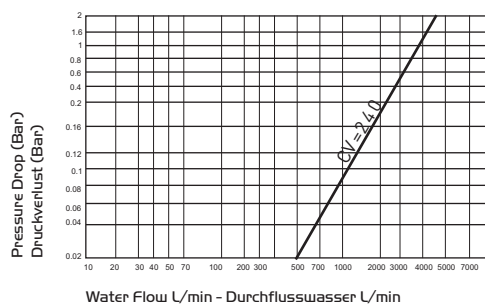
75

4415.5

16 Bar FPM (Viton)

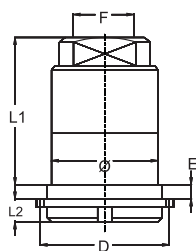
Brass Nickelplated - Messing Vernickelt
Stainless Steel - Edelstahl

Double Shut-off - Beidseitig absperrend



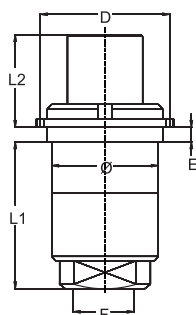
**Coupling
Kupplung**

Body Size Nennweite	Connection Anschluß F	Order No - Bestellnr.	L1 (mm)	L2 (mm)	D (mm)	Ø (mm)	E (mm)	Weight Gewicht (kg)
------------------------	-----------------------------	-----------------------	------------	------------	-----------	-----------	-----------	---------------------------



75	BSP 3"	104.75 DGB 90	232	20	183	171	16	26.200
----	--------	---------------	-----	----	-----	-----	----	--------

75	NPT 3"	104.75 NGB 90	232	20	183	171	16	26.200
----	--------	---------------	-----	----	-----	-----	----	--------



75	BSP 3"	104.75 DUB 90	228	121	183	171	16	32
----	--------	---------------	-----	-----	-----	-----	----	----

75	NPT 3"	104.75 NUB 90	228	121	183	171	16	32
----	--------	---------------	-----	-----	-----	-----	----	----